

State of Wyoming Corner Record

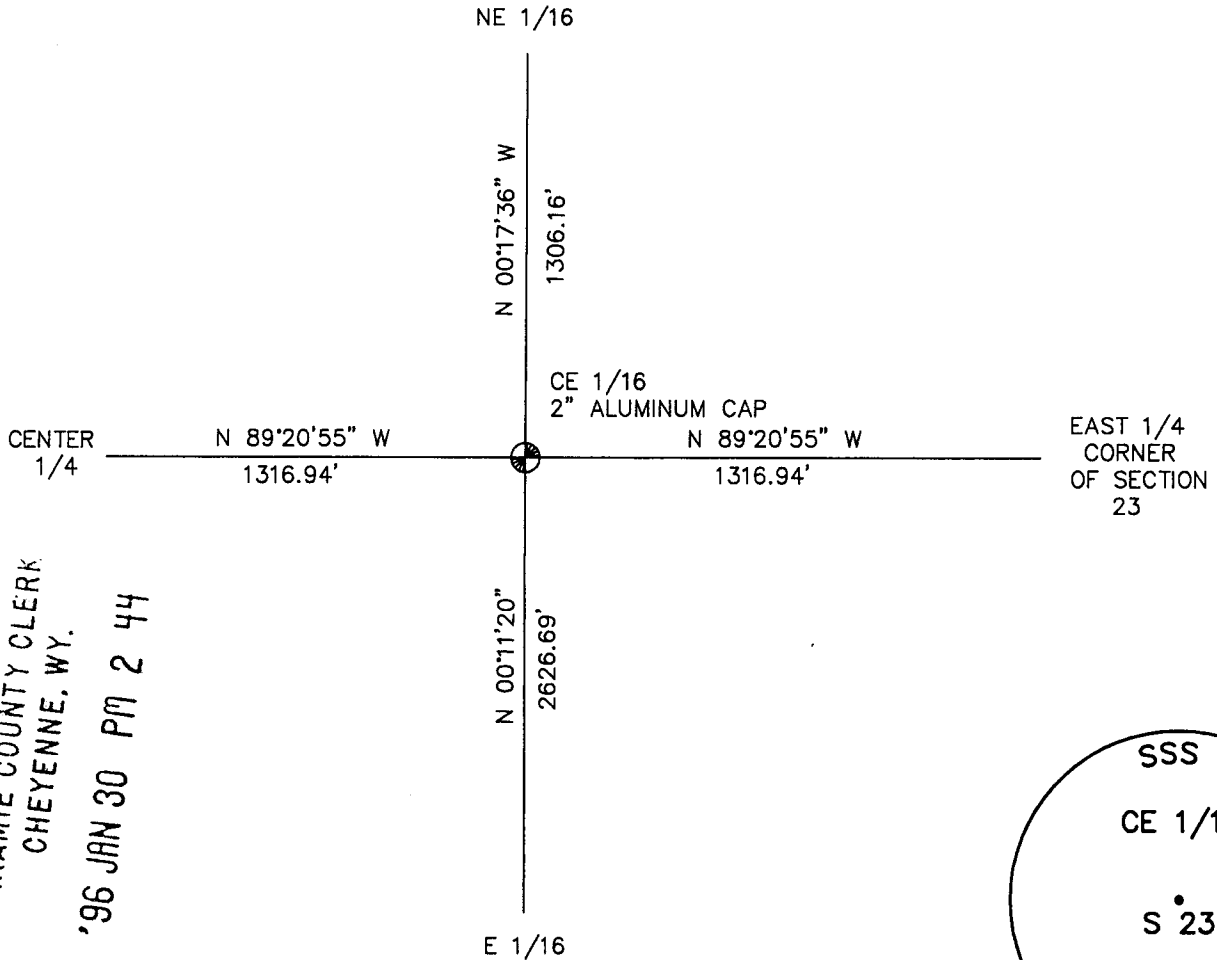
(In compliance with the CORNER PERPETUATION AND FILING ACT, Wyoming Statutes, 1977, Section 36-11-101, et. seq., and the Rules and Regulations of the Board of Registration for Professional Engineers and Professional Land Surveyors)

Reverse side of this form may be used if more space is needed.

Record of original survey and citation of source of historical information (if corner is lost or obliterated). Description of corner monumentation evidence found and/or monument and accessories established to perpetuate the location of this corner. Sketch of relative location of monument, accessories, and reference points with course and distance to adjacent corner(s) (if determined in this survey). Method and rationale for reestablishment of lost or obliterated corner.

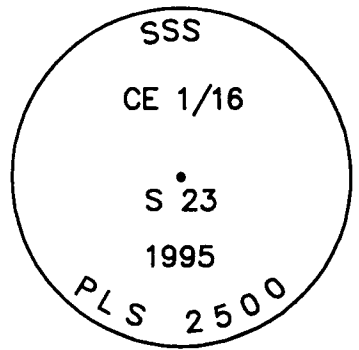
MONUMENT SET: SET 5/8" X 24" REBAR WITH 2" ALUMINUM CAP SURROUNDED BY A COLLAR OF STONE.
CAP MARKED AS SHOWN BELOW.

REFERENCES: REFERENCES SHOWN BELOW.



176395

LARAMIE COUNTY CLERK
CHEYENNE, WY.
'96 JAN 30 PM 2 44



Date of Field Work: 11-17-95 Office Reference: 95102

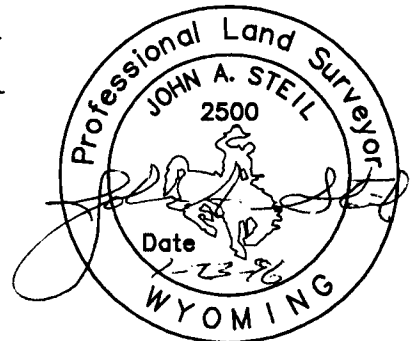
CROSS INDEX DIAGRAM

A	1	2	3	4	5	6	7	8	9	10	11	12	13	14	15	16	17	18	19	20	21	22	23	24	25
B																									
C		6			5				4					3					2						1
D																									
E																									
F																									
G			7			8			9					10					11						12
H																									
J																									
K																									
L																									
M																									
N																									
O																									
P																									
Q																									
R																									
S																									
T																									
U																									
V																									
W																									
X																									
Y																									
Z																									

Firm/Agency, Address
STEIL SURVEYING SERVICES, LLC
1102 WEST 19th STREET
CHEYENNE WY 82001

Telephone Number: (307) 634-7273

This corner record was prepared by me or under my direction and supervision.
SEAL & SIGNATURE



BOOK 1416